

# LAKEFIELD OF THE LANDINGS AT WELLINGTON P.U.D. - PLAT 2A

IN PART OF SECTION 7 AND 18, TOWNSHIP 44 SOUTH, RANGE 41 EAST

PALM BEACH COUNTY, FLORIDA

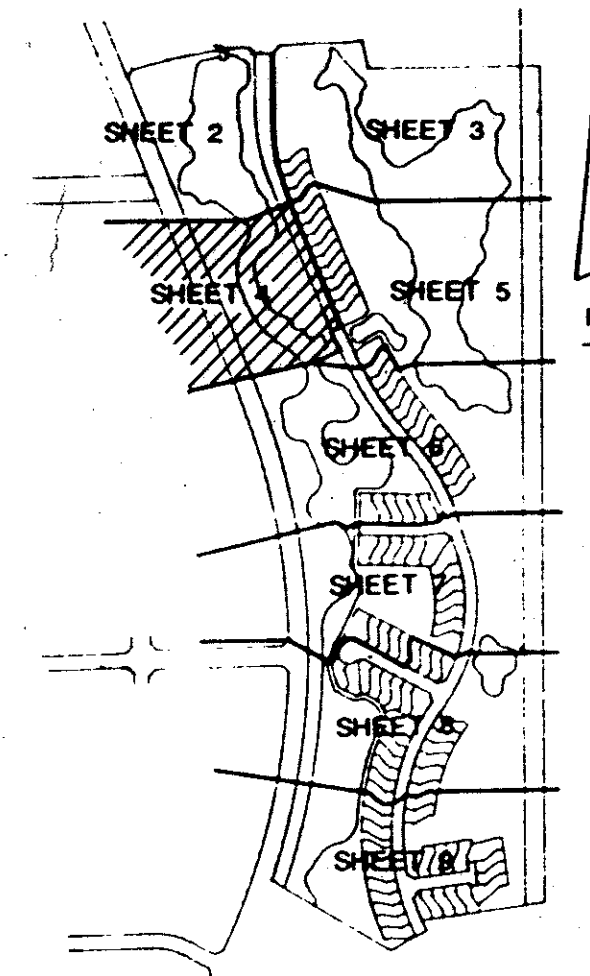
IN NINE SHEETS SHEET NO. 4

GEE & JENSON  
ENGINEERS - ARCHITECTS - PLANNERS, INC.  
WEST PALM BEACH, FLORIDA  
AUGUST 1989

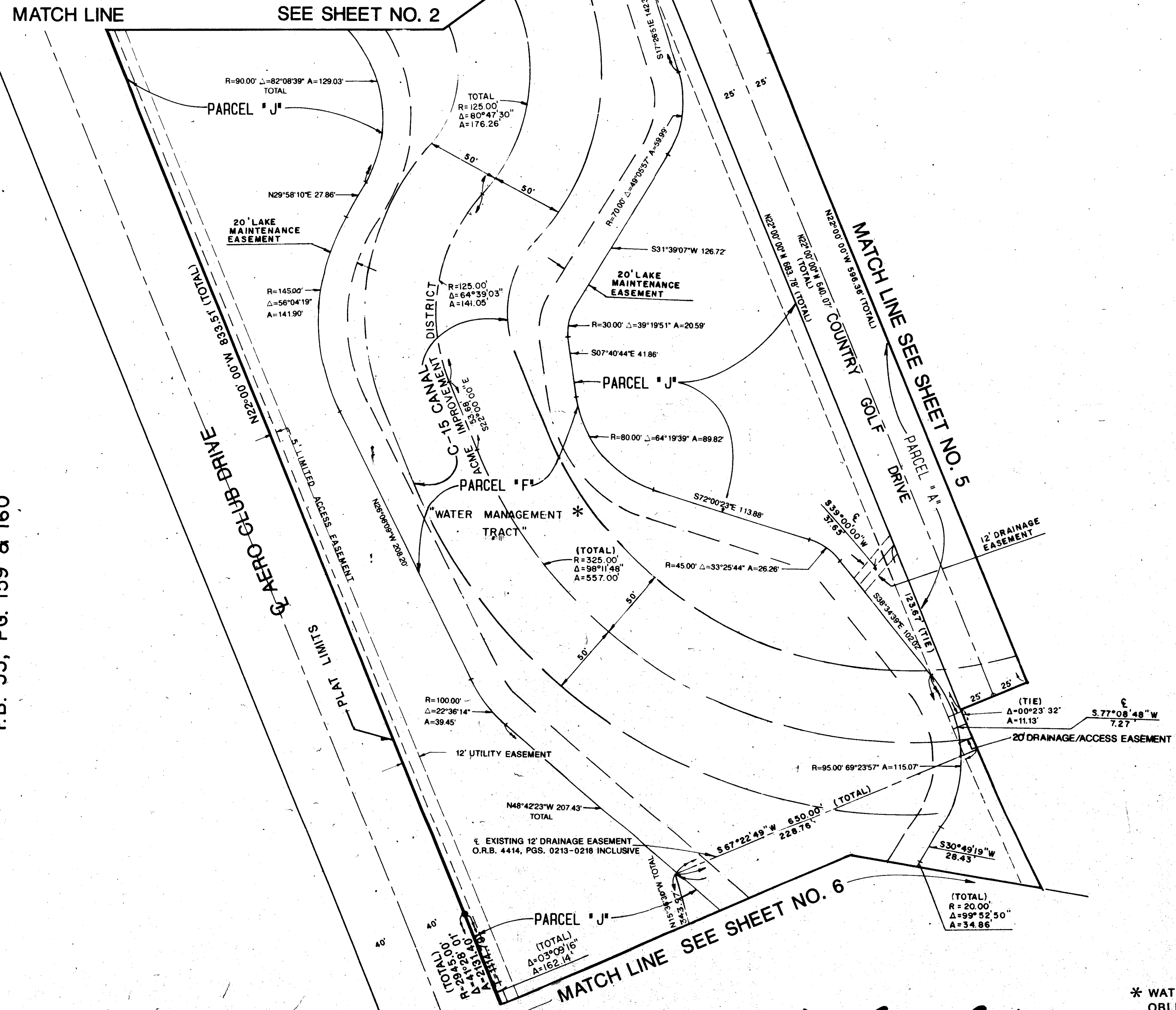
0 40 80 120 160  
SCALE IN FEET SCALE: 1" = 40'

0269-008

100



STATE OF FLORIDA  
COUNTY OF PALM BEACH  
This plat was filed for  
record at \_\_\_\_\_ M. this \_\_\_\_\_ day  
of \_\_\_\_\_ 1989, and duly  
recorded in Plat Book No. \_\_\_\_\_  
on Pages \_\_\_\_\_ thru \_\_\_\_\_  
JOHN B. DUNKLE  
Clerk Circuit Court  
By: \_\_\_\_\_ D.C.



THE LANDINGS AT WELLINGTON P.U.D.  
P.B. 53, PG. 159 & 160

Let's field of the Landings  
Subdivision at Wellington  
BOOK 04 B  
PAGE 159 RE  
33414  
78-287  
7/11/49/41 Same  
THE 728

COMPUTED DWL/CAD  
DRAWN DWL/CAD  
CHECKED W.J.J.  
APPROVED A.H.D.

ADD. BY [Signature]  
CHECKED BY [Signature]

PET. 78-287

0269-008

64/100

\* WATER MANAGEMENT TRACTS ARE THE PERPETUAL MAINTENANCE OBLIGATION OF THE LAKEFIELD HOMEOWNERS ASSOCIATION, INC.

LAKEFIELD OF THE LANDINGS AT WELLINGTON P.U.D. - PLAT 2A

NOTE: ALL LINES ARE RADIAL UNLESS OTHERWISE NOTED !